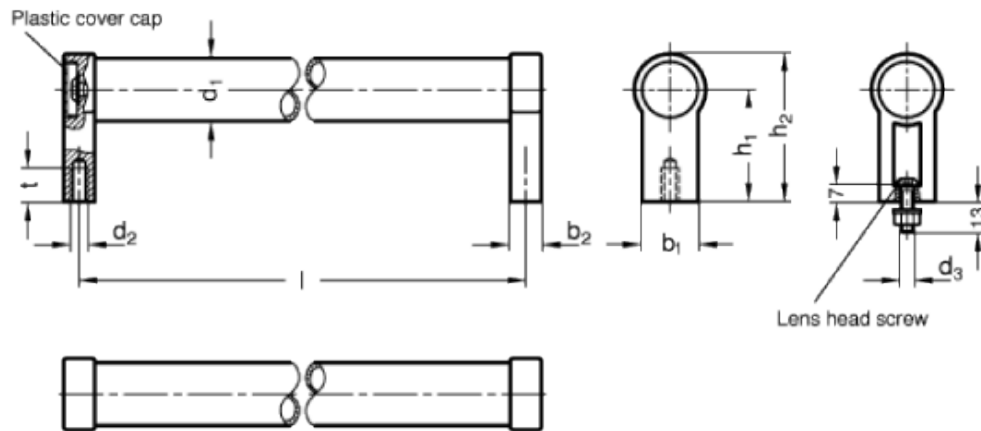


GN 333.1

Tubular handles



technical informations

Material

Aluminium, wall thickness 1.5 mm.

Handle shanks

Die-cast Zinc alloy, RAL 9005 black colour, matte finish, epoxy resin coating, fitted to the tube by means of a screw.

Tube end caps

Polyamide based (PA) technopolymer.

Tube end caps

Polyamide based (PA) technopolymer.

Finish

Version SW:

- Tube: RAL 9005 black colour, matte finish, epoxy resin coating
- Handle shanks: RAL 9005 black colour, matte finish, epoxy resin coating

Version EL:

- Tube: anodised, natural colour
- Handle shanks: RAL 9005 black colour, matte finish, epoxy resin coating

Version ES:

- Tube: anodised, natural colour
- Handle shanks: silver RAL 9006, matte finish

End caps

Polyamide based (PA) technopolymer, light grey colour. Resistant to solvents, oils, greases and other chemical agents.

Assembly

- Type A: back mounting, tapped blind hole.
- Type B: front mounting, through holes for lens head screws ISO 7380-M6-20.

Special executions on request (For sufficient quantities)

Different lengths.

Features and applications

GN 333.1 tubular handles are characterised by a high stability thanks to the assembly of the handle shanks to the tube by means of two screws.

These handles are typically used on turning or rolling doors for machines and equipment.

Standard Elements	Main dimensions					Mounting holes				Weight
Description	$l \pm 0.25$	h_1	b_1	h_2	b_2	d_1	d_2	d_3	$t_{min.}$	g
GN 333.1-20-180-A-EL	180	42	24	54	12	20	M6	-	12	180
GN 333.1-20-180-A-SW	180	42	24	54	12	20	M6	-	12	180
GN 333.1-20-180-A-ES	180	42	24	54	12	20	M6	-	12	180
GN 333.1-20-200-A-EL	200	42	24	54	12	20	M6	-	12	200
GN 333.1-20-200-A-SW	200	42	24	54	12	20	M6	-	12	200
GN 333.1-20-200-A-ES	200	42	24	54	12	20	M6	-	12	200
GN 333.1-20-250-A-EL	250	42	24	54	12	20	M6	-	12	220
GN 333.1-20-250-A-SW	250	42	24	54	12	20	M6	-	12	220
GN 333.1-20-250-A-ES	250	42	24	54	12	20	M6	-	12	220
GN 333.1-20-300-A-EL	300	42	24	54	12	20	M6	-	12	240
GN 333.1-20-300-A-SW	300	42	24	54	12	20	M6	-	12	240
GN 333.1-20-300-A-ES	300	42	24	54	12	20	M6	-	12	240
GN 333.1-20-350-A-EL	350	42	54	54	12	20	M6	-	12	250
GN 333.1-20-350-A-SW	350	42	24	54	12	20	M6	-	12	250
GN 333.1-20-350-A-ES	350	42	24	54	12	20	M6	-	12	250
GN 333.1-20-400-A-EL	400	42	24	54	12	20	M6	-	12	270
GN 333.1-20-400-A-SW	400	42	24	54	12	20	M6	-	12	270
GN 333.1-20-400-A-ES	400	42	24	54	12	20	M6	-	12	270
GN 333.1-28-200-A-EL	200	50	25	66	14	28	M8	-	15	340
GN 333.1-28-200-A-SW	200	50	25	66	14	28	M8	-	15	340
GN 333.1-28-200-A-ES	200	50	25	66	14	28	M8	-	15	340
GN 333.1-28-250-A-EL	250	50	25	66	14	28	M8	-	15	360
GN 333.1-28-250-A-SW	250	50	25	66	14	28	M8	-	15	360
GN 333.1-28-250-A-ES	250	50	25	66	14	28	M8	-	15	360

GN 333.1-28-300-A-EL	300	50	25	66	14	28	M8	-	15	390
GN 333.1-28-300-A-SW	300	50	25	66	14	28	M8	-	15	390
GN 333.1-28-300-A-ES	300	50	25	66	14	28	M8	-	15	390
GN 333.1-28-350-A-EL	350	50	25	66	14	28	M8	-	15	410
GN 333.1-28-350-A-SW	350	50	25	66	14	28	M8	-	15	410
GN 333.1-28-350-A-ES	350	50	25	66	14	28	M8	-	15	410
GN 333.1-28-400-A-EL	400	50	25	66	14	28	M8	-	15	440
GN 333.1-28-400-A-SW	400	50	25	66	14	28	M8	-	15	440
GN 333.1-28-400-A-ES	400	50	25	66	14	28	M8	-	15	440
GN 333.1-28-500-A-EL	500	50	25	66	14	28	M8	-	15	480
GN 333.1-28-500-A-SW	500	50	25	66	14	28	M8	-	15	480
GN 333.1-28-500-A-ES	500	50	25	66	14	28	M8	-	15	480
GN 333.1-28-600-A-EL	600	50	25	66	14	28	M8	-	15	500
GN 333.1-28-600-A-SW	600	50	25	66	14	28	M8	-	15	500
GN 333.1-28-600-A-ES	600	50	25	66	14	28	M8	-	15	500
GN 333.1-30-200-A-EL	200	51	25	68	17	30	M8	-	15	320
GN 333.1-30-200-A-SW	200	51	25	68	17	30	M8	-	15	320
GN 333.1-30-200-A-ES	200	51	25	68	17	30	M8	-	15	320
GN 333.1-30-300-A-EL	300	51	25	68	17	30	M8	-	15	380
GN 333.1-30-300-A-SW	300	51	25	68	17	30	M8	-	15	380
GN 333.1-30-300-A-ES	300	51	25	68	17	30	M8	-	15	380
GN 333.1-30-350-A-EL	350	51	25	68	17	30	M8	-	15	407
GN 333.1-30-350-A-SW	350	51	25	68	17	30	M8	-	15	407
GN 333.1-30-350-A-ES	350	51	25	68	17	30	M8	-	15	407
GN 333.1-30-400-A-EL	400	51	25	68	17	30	M8	-	15	450
GN 333.1-30-400-A-SW	400	51	25	68	17	30	M8	-	15	450
GN 333.1-30-400-A-ES	400	51	25	68	17	30	M8	-	15	450
GN 333.1-30-500-A-EL	500	51	25	68	17	30	M8	-	15	490
GN 333.1-30-500-A-SW	500	51	25	68	17	30	M8	-	15	490
GN 333.1-30-500-A-ES	500	51	25	68	17	30	M8	-	15	490
GN 333.1-30-600-A-EL	600	51	25	68	17	30	M8	-	15	540
GN 333.1-30-600-A-SW	600	51	25	68	17	30	M8	-	15	540
GN 333.1-30-600-A-ES	600	51	25	68	17	30	M8	-	15	540
GN 333.1-30-1000-A-EL	1000	51	25	68	17	30	M8	-	15	750
GN 333.1-30-1000-A-SW	1000	51	25	68	17	30	M8	-	15	750
GN 333.1-30-1000-A-ES	1000	51	25	68	17	30	M8	-	15	750
GN 333.1-28-200-B-EL	200	50	25	66	14	28	-	M6	-	320
GN 333.1-28-200-B-SW	200	50	25	66	14	28	-	M6	-	320
GN 333.1-28-200-B-ES	200	50	25	66	14	28	-	M6	-	320
GN 333.1-28-250-B-EL	250	50	25	66	14	28	-	M6	-	340
GN 333.1-28-250-B-SW	250	50	25	66	14	28	-	M6	-	340
GN 333.1-28-250-B-ES	250	50	25	66	14	28	-	M6	-	340
GN 333.1-28-300-B-EL	300	50	25	66	14	28	-	M6	-	370
GN 333.1-28-300-B-SW	300	50	25	66	14	28	-	M6	-	370
GN 333.1-28-300-B-ES	300	50	25	66	14	28	-	M6	-	370

GN 333.1-28-350-B-EL	350	50	25	66	14	28	-	M6	-	380
GN 333.1-28-350-B-SW	350	50	25	66	14	28	-	M6	-	380
GN 333.1-28-350-B-ES	350	50	25	66	14	28	-	M6	-	380
GN 333.1-28-400-B-EL	400	50	25	66	14	28	-	M6	-	420
GN 333.1-28-400-B-SW	400	50	25	66	14	28	-	M6	-	420
GN 333.1-28-400-B-ES	400	50	25	66	14	28	-	M6	-	420
GN 333.1-28-500-B-EL	500	50	25	66	14	28	-	M6	-	460
GN 333.1-28-500-B-SW	500	50	25	66	14	28	-	M6	-	460
GN 333.1-28-500-B-ES	500	50	25	66	14	28	-	M6	-	460
GN 333.1-28-600-B-SW	600	50	25	66	14	28	-	M6	-	480
GN 333.1-28-600-B-EL	600	50	25	66	14	28	-	M6	-	480
GN 333.1-28-600-B-ES	600	50	25	66	14	28	-	M6	-	480



ELESA and GANTER models all rights reserved in accordance with the law. Always mention the source when reproducing our drawings.

STANDARD MACHINE ELEMENTS WORLDWIDE